



DASCOM Americas

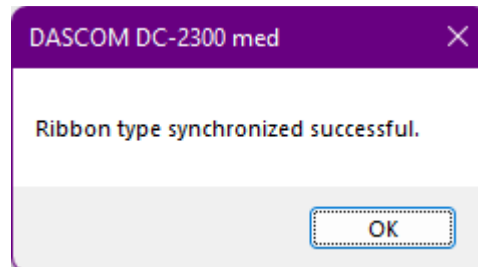
34 Lakeview Drive
Verona, Virginia 24482
(877) 434 1377

DC-2300 – Adding a Watermark to the Printers Driver

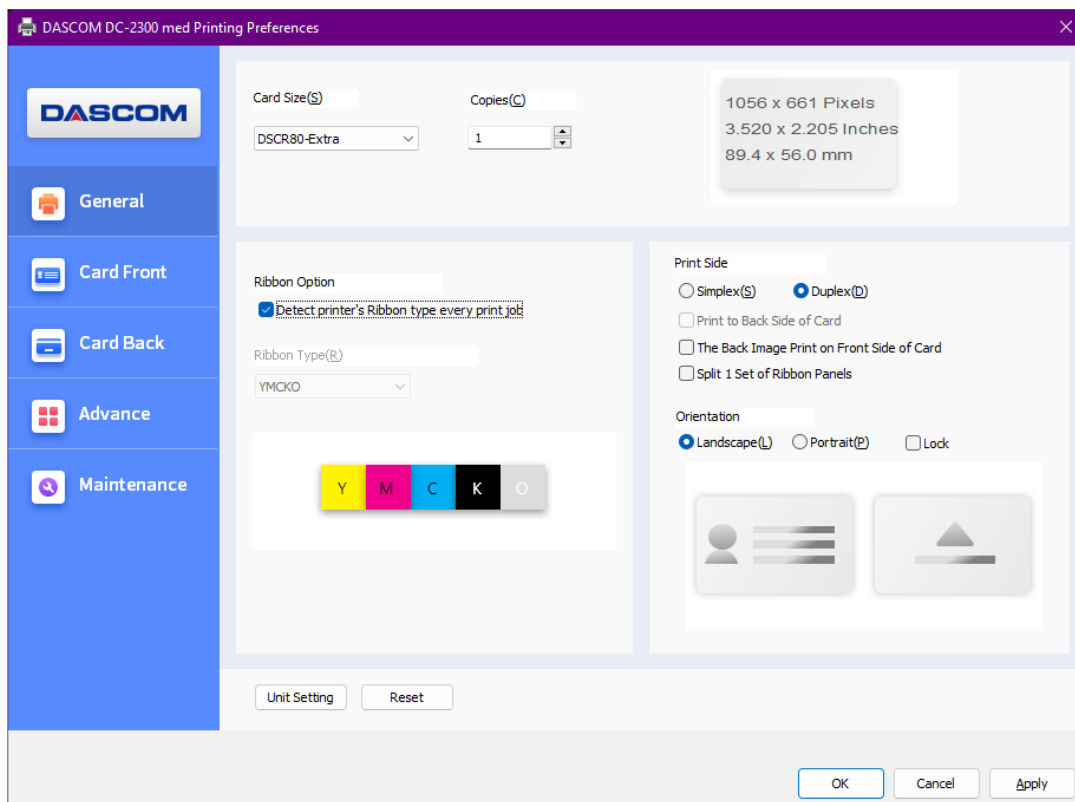
A Watermark is an identifying image or pattern in an image that appears as various shades of lightness/darkness when viewed by transmitted light (or when viewed by reflected light, atop a dark background), caused by thickness or density variations in the image.

To add a Watermark so that it is printed when using the Dascom DC-3300, the watermark has to be a monochrome bitmap file (with a resolution of 1016x656 pixels), can be added into the DC-3300 Driver and here is how –

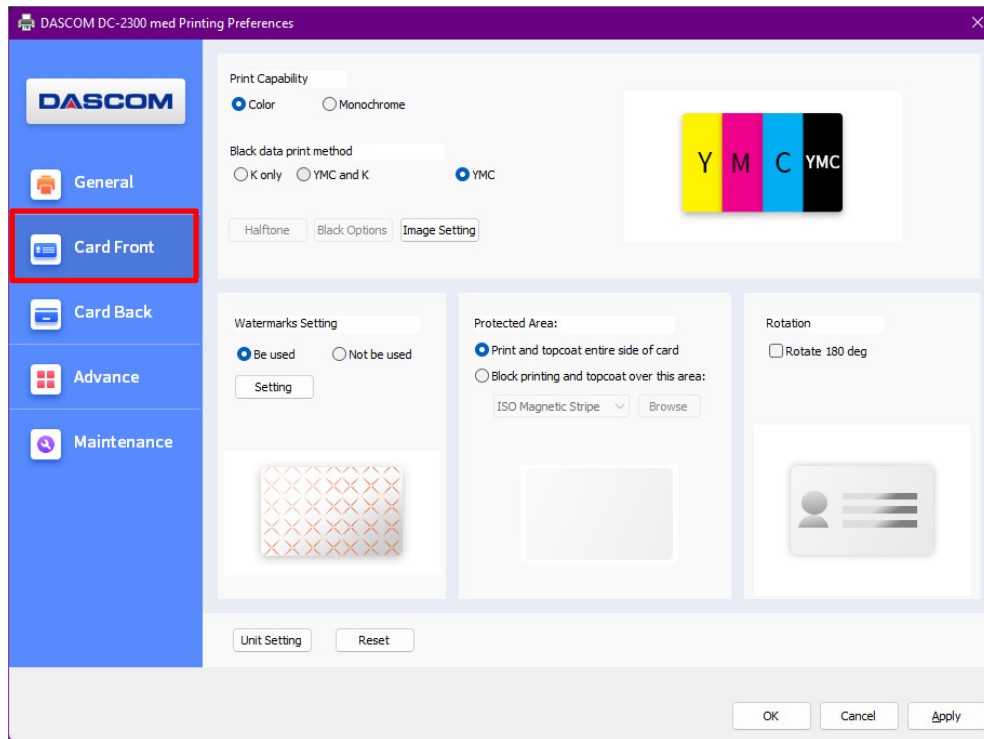
With an YMCKO Color Ribbon installed and after the Printer Driver displays that it recognizes the Ribbon



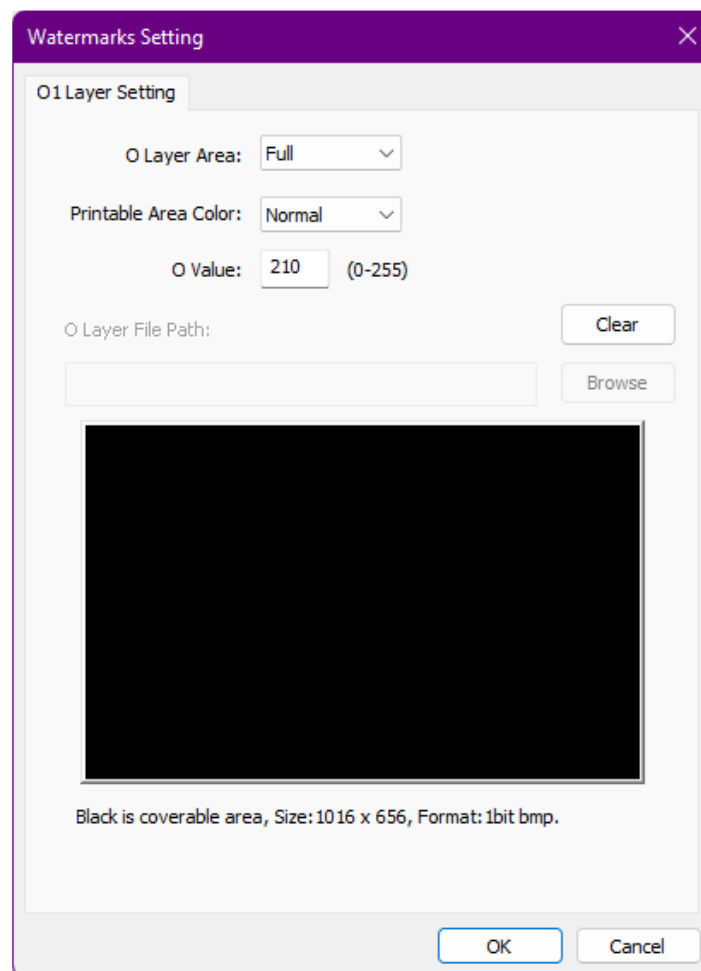
Open the DC-3300 Printer Driver Preferences -



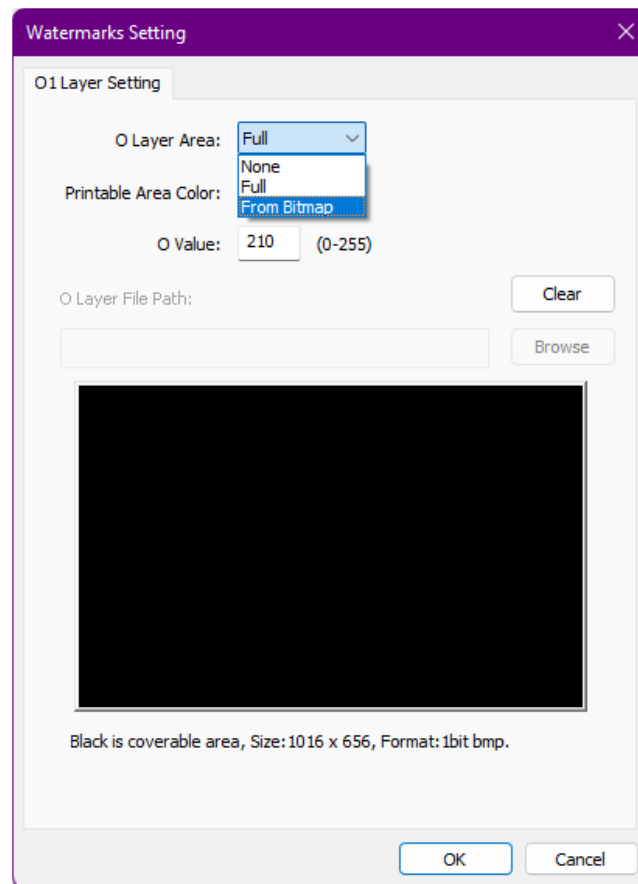
Click on the **Card Front** tab seen along the left side



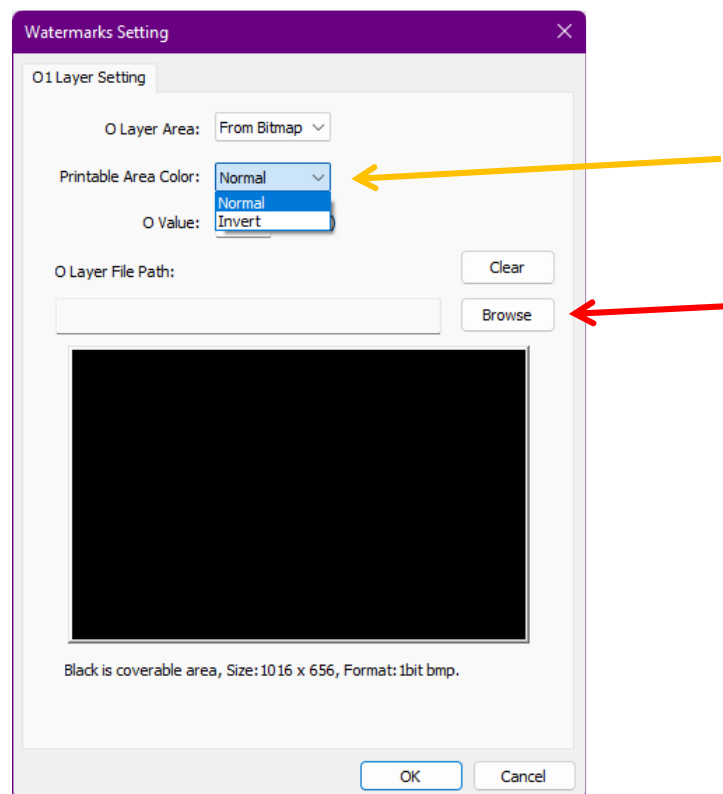
On the **Watermark Settings** parameter, make sure the “Be Used” selection is bulleted and click on the “Settings” button.



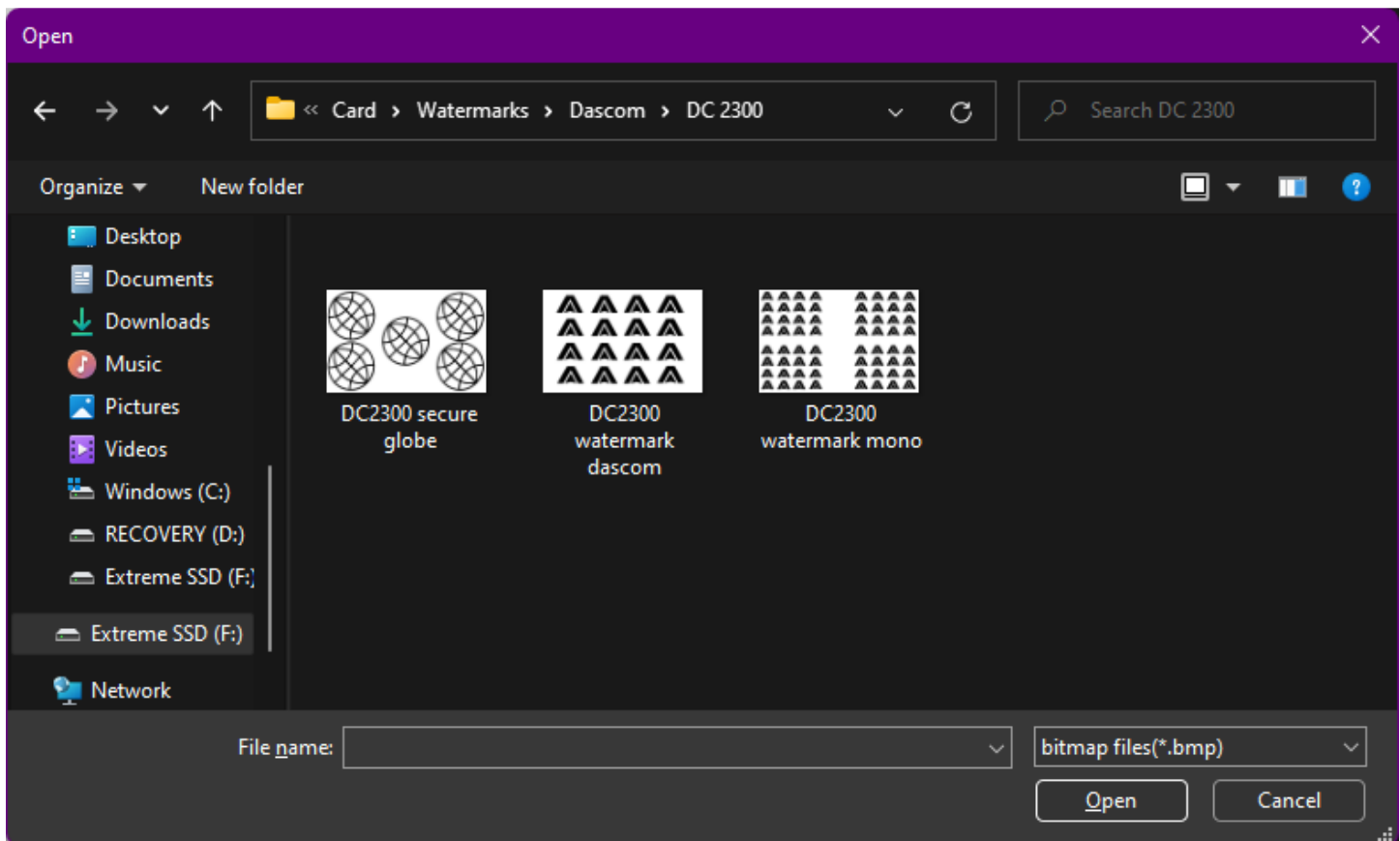
Change the “O Layer Area” setting from Full to **From Bitmap**.



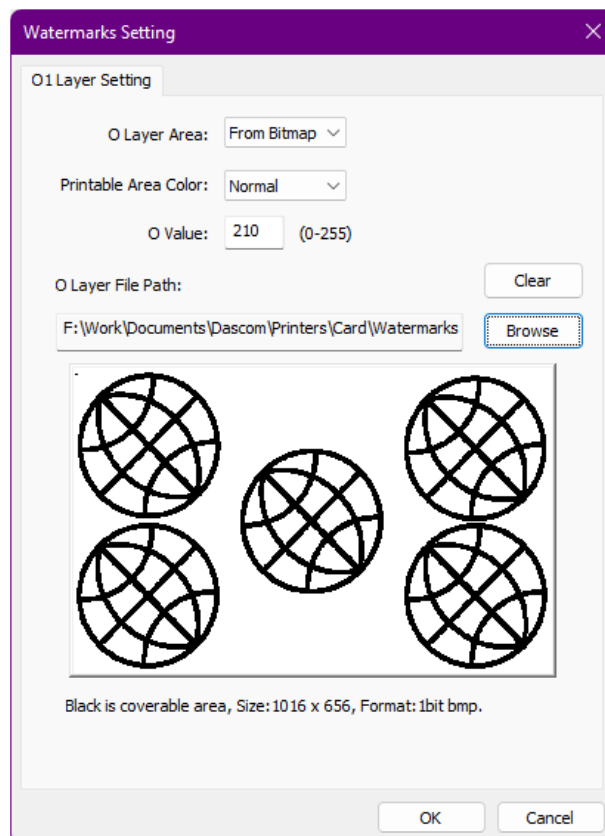
Select how the Watermark image will be laid out on the Overcoat layer, **Normal** being a “raised” look where **Invert** is a “recessed” look on the Card. The **O value** determines how much intensity the watermark is. Then click on the **BROWSE** button to locate the desired Watermark –



Select the Watermark you want to add then click OPEN –

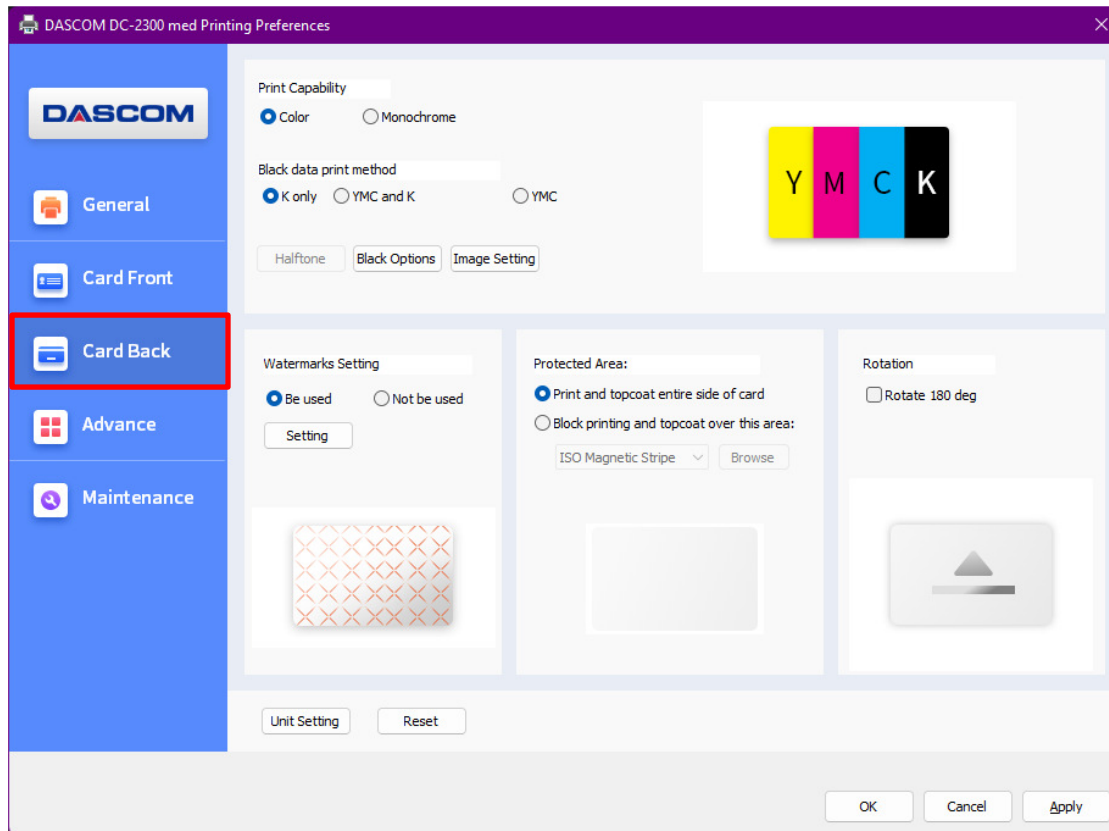


If the Watermark Is the proper dimensions, it should be visible in the Preview Window. Click OK and now it's available to be printed onto the next card.

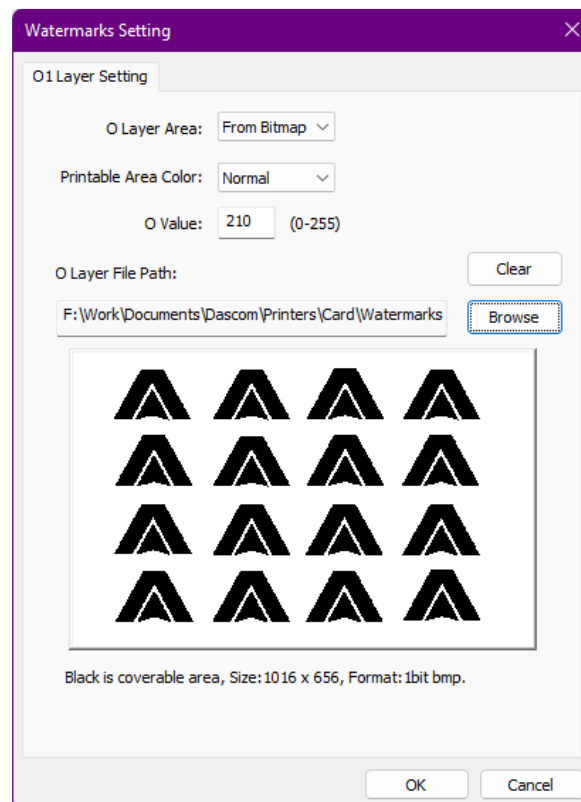


A Great feature to the DC-2300 Printer is two separate Watermarks can be applied if you're printing dual-sided Cards.

This can be accomplished by clicking on the **Card (Back)** tab and following the steps as above.

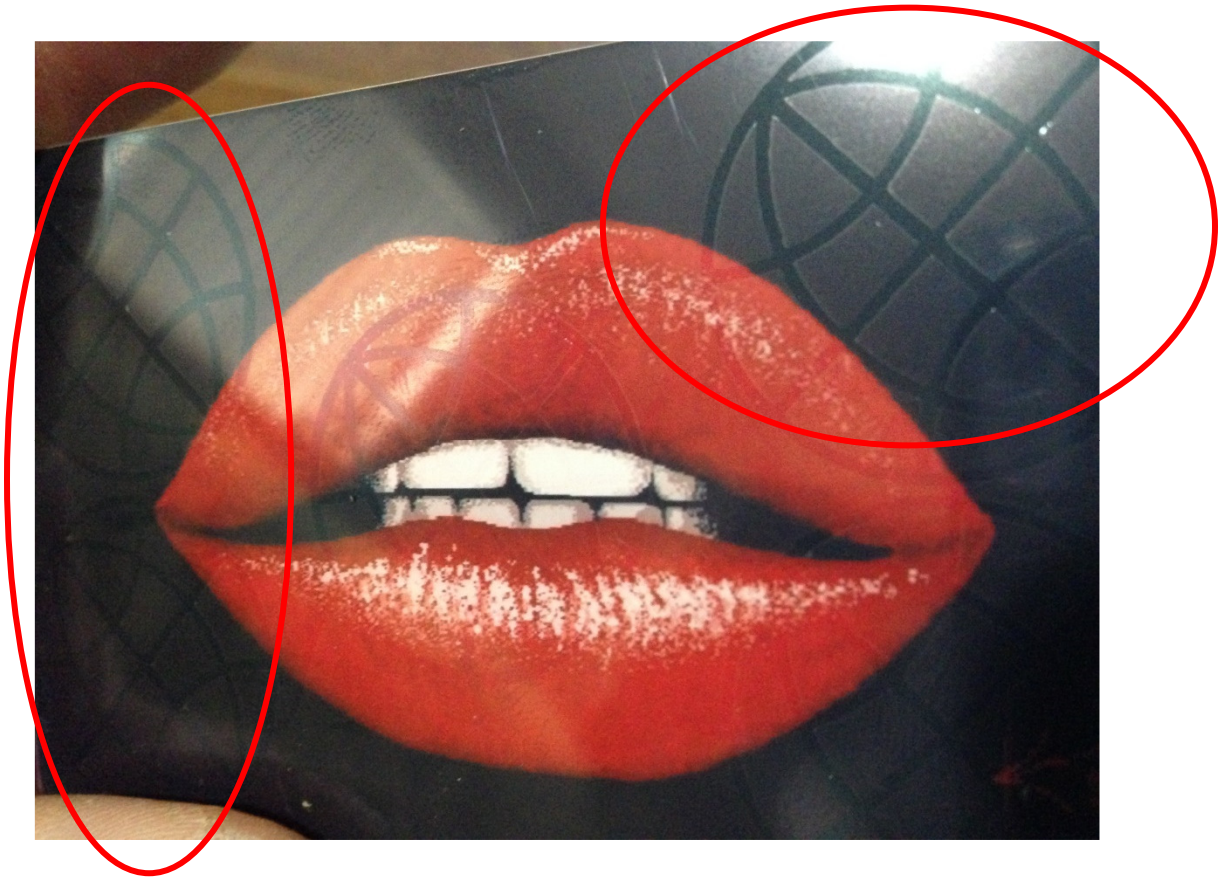


Set the settings like above but browse to your second different Watermark and click Open then OK to use it -



Resulting in printing an output similar to this –

Front side -



Back Side -

