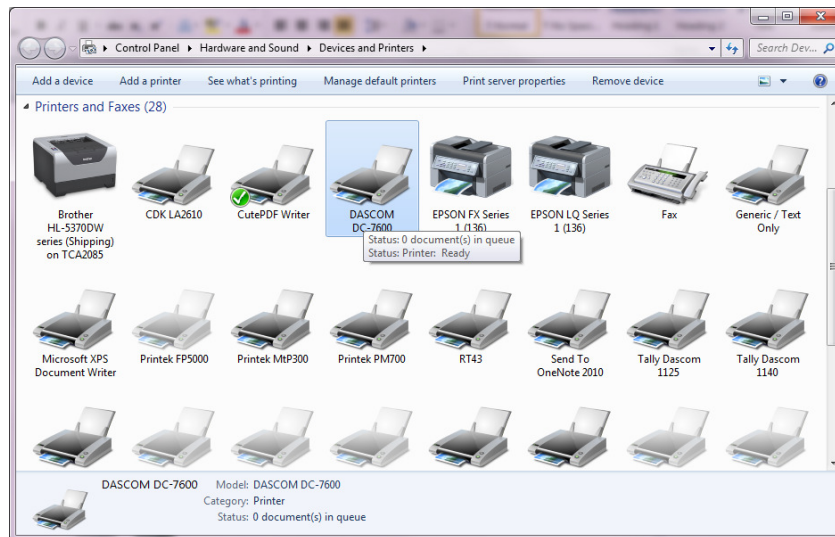


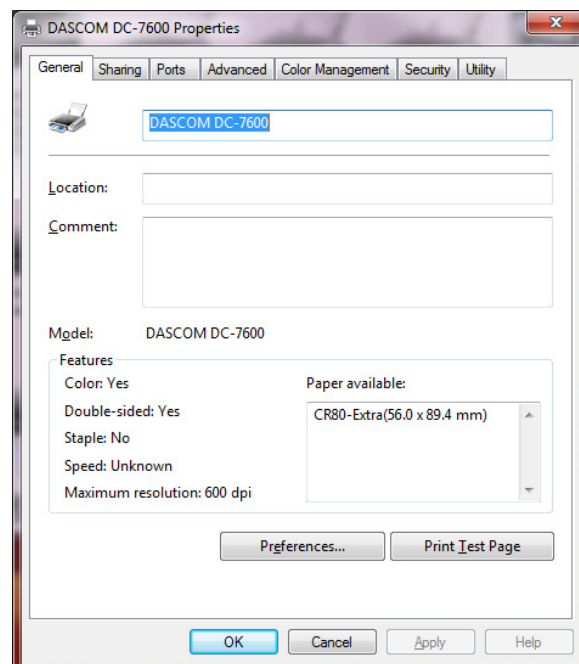
## Firmware Update to DASCOM DC-7600 in Windows 7

Proper Driver installation is needed before updating the DC-7600 Printer can begin, with the selection of the correct USB port established.

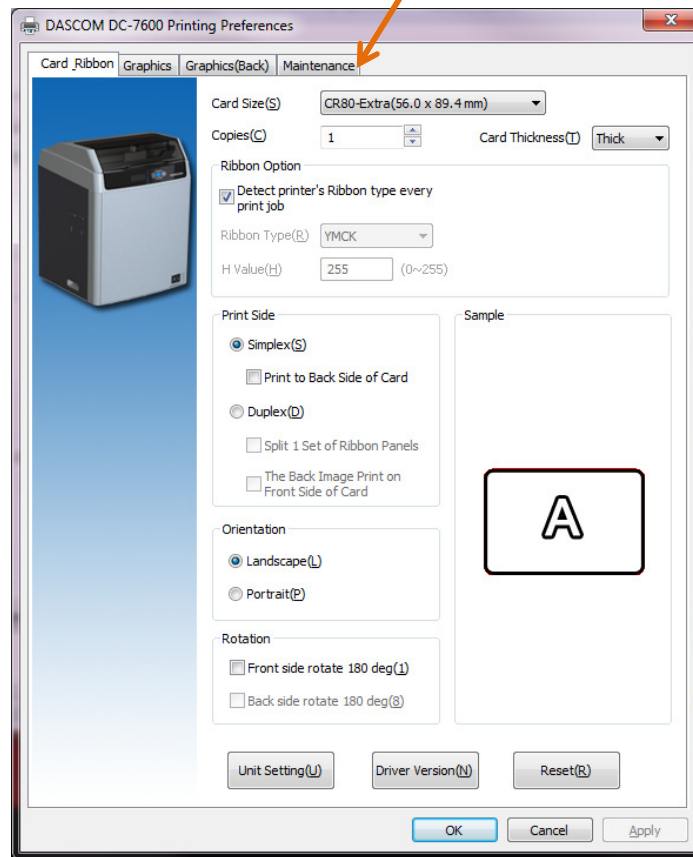
- 1) Click "Devices and Printers" in control panel



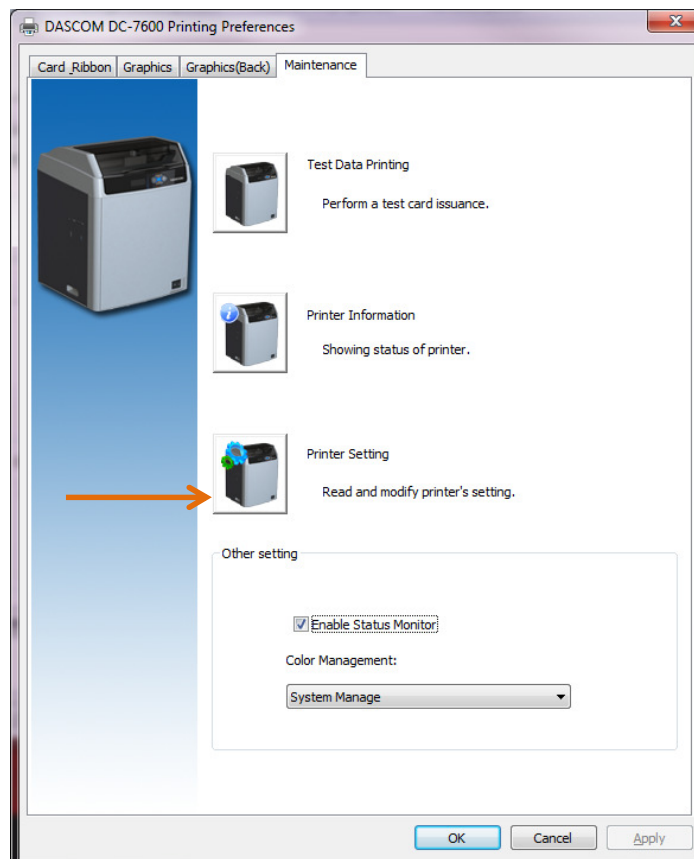
- 2) "Right click" on the Driver to select the "Printer Properties" of the DC-7600 Printer then click on the Preferences button.



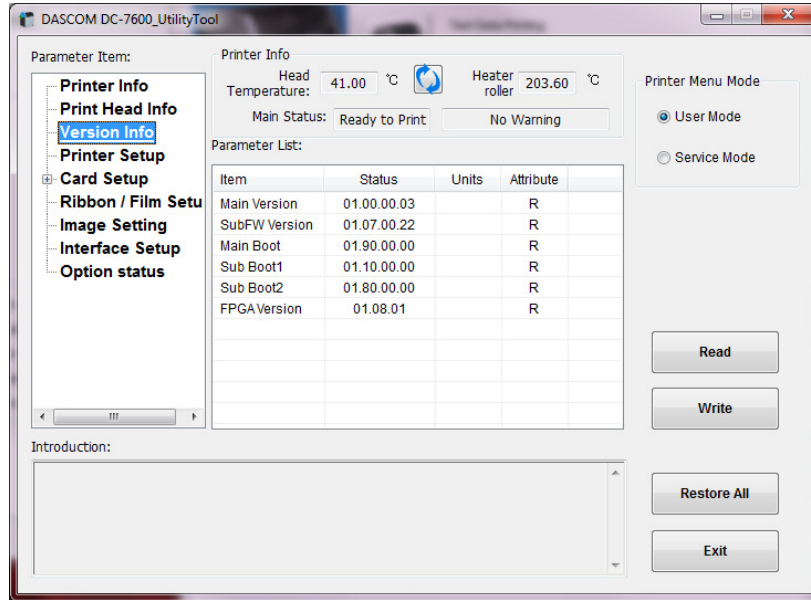
3) At the DC-7600 Printing Preferences page, click on the Maintenance tab



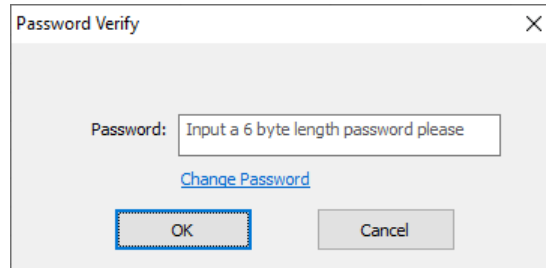
4) Click on the Printer Settings button.



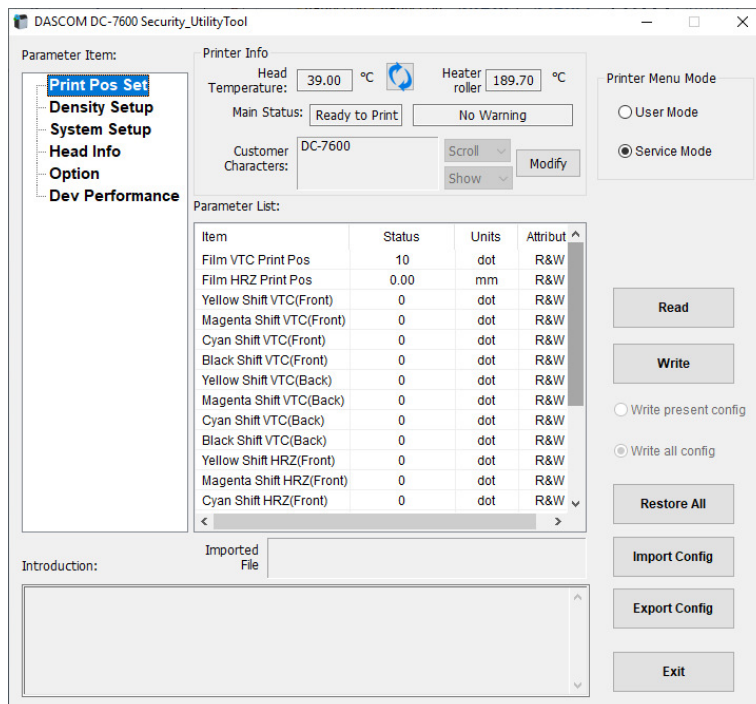
5) From the list of Parameter Items, select **Version Info** to verify what the current Firmware the Printer has.



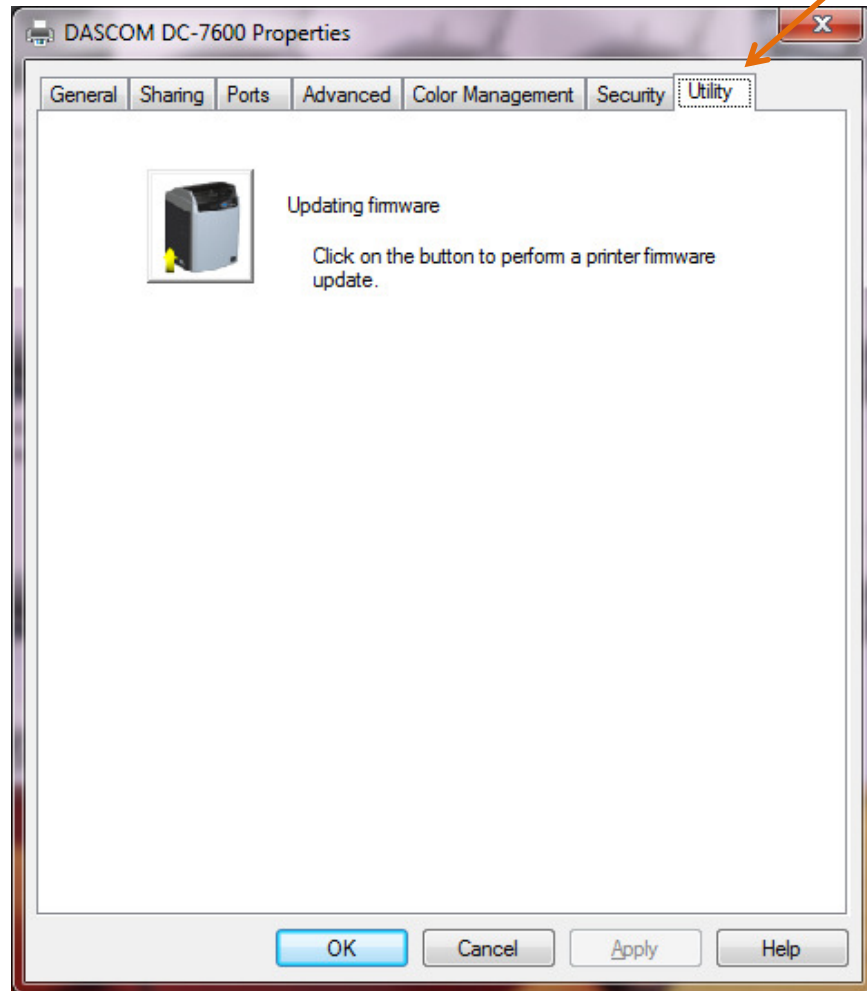
6) Change the bullet from User Mode to Service Mode and when prompted, add the password – 123456



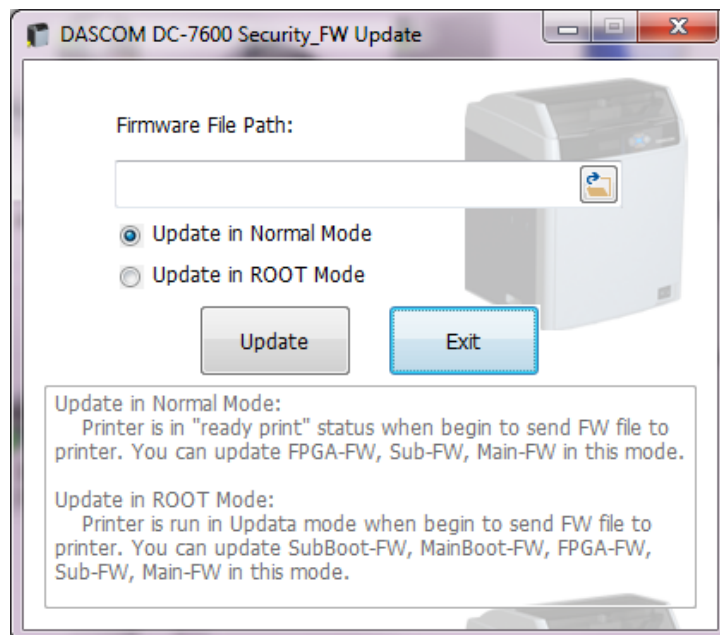
7) Jot down or do a screen capture of **ALL** the Print Position parameters seen on the Service Mode.



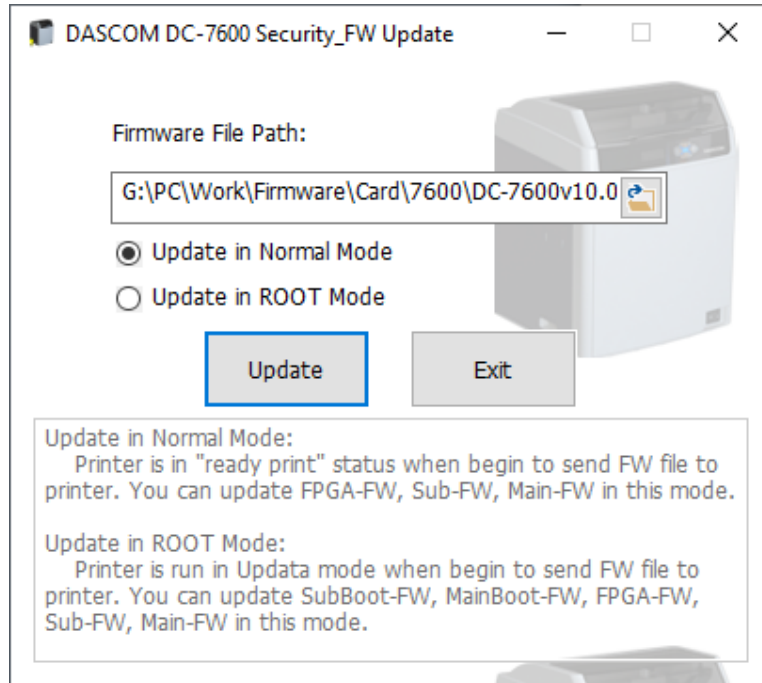
- 8) Click on the Exit button and then OK to get back to the Printer Properties page to select the Utility tab.



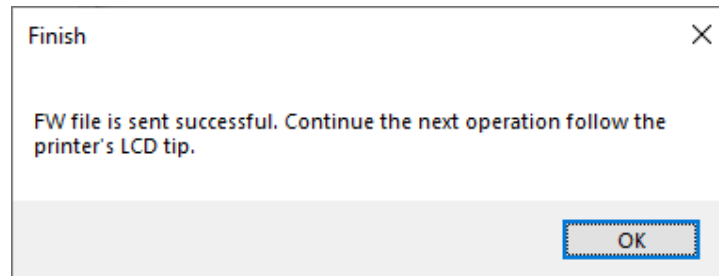
- 9) Click on the Browse button to point what location the firmware to download to the Printer is and then select the Firmware (ie DC-7600v10.02.00.03 FWPGA.mot)



10) After selecting the firmware path, click on "Update in Normal mode".



11) A "gas gauge" window will show the progress of the Firmware download then a Success window will show

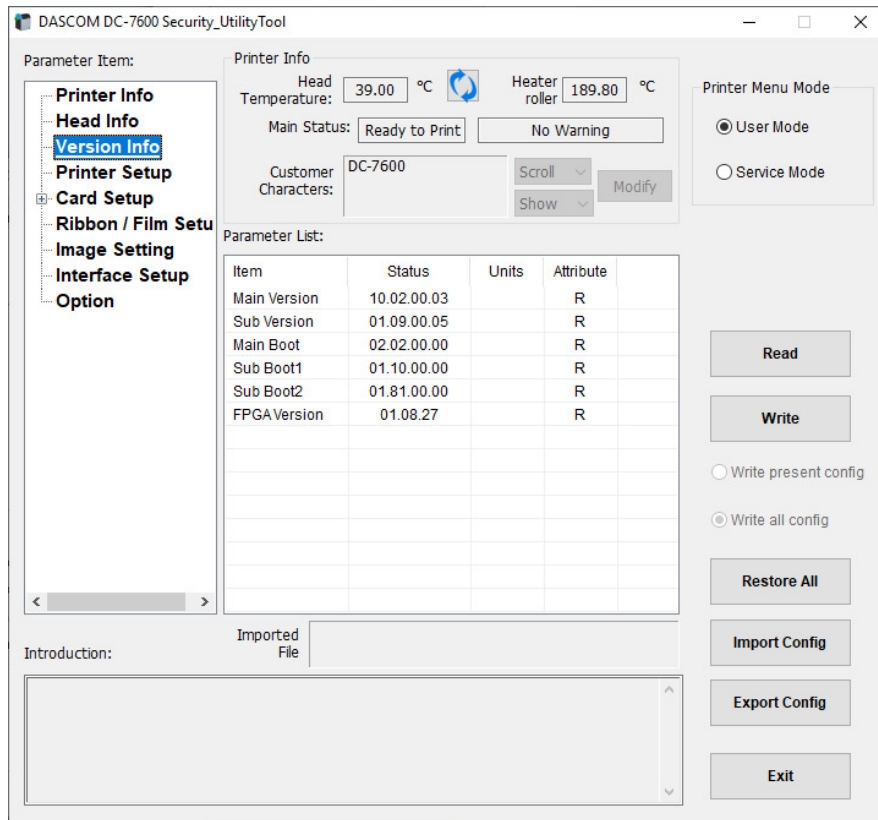


12) The display of the Printer will show the progression of the Update.

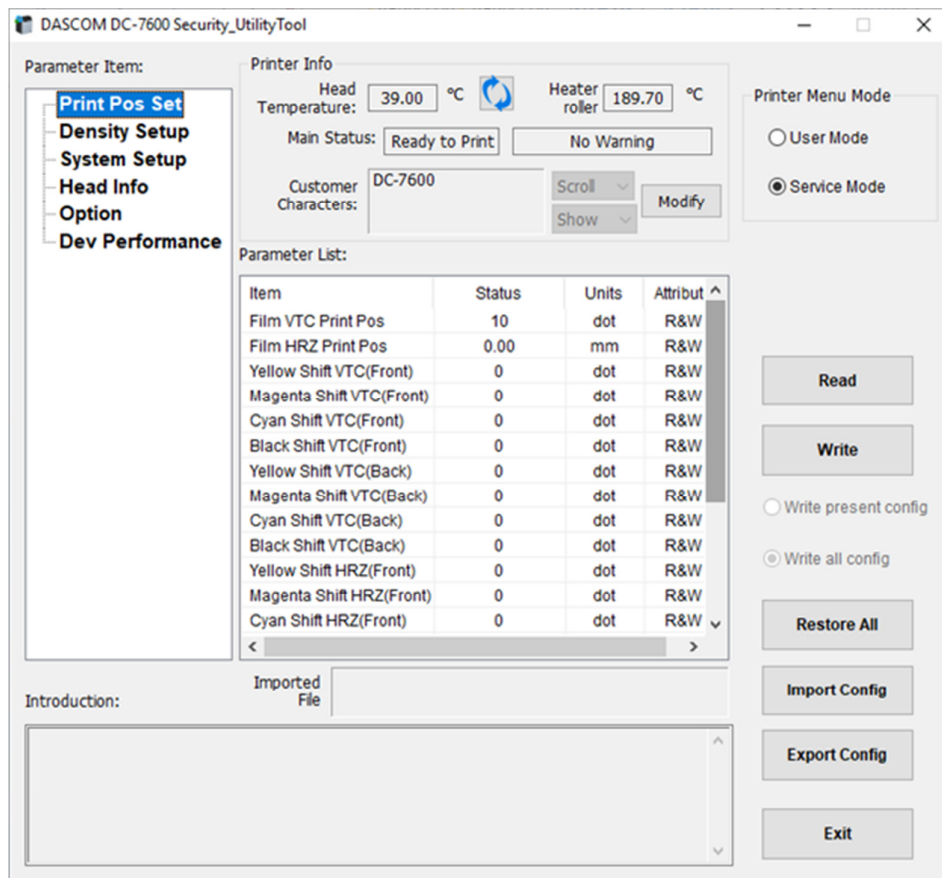
13) Press EXIT button to back out of the Firmware Update Utility.

14) The Printer will continue to progress through the Update and when finished will power cycle, Off then On, coming up to a READY state.

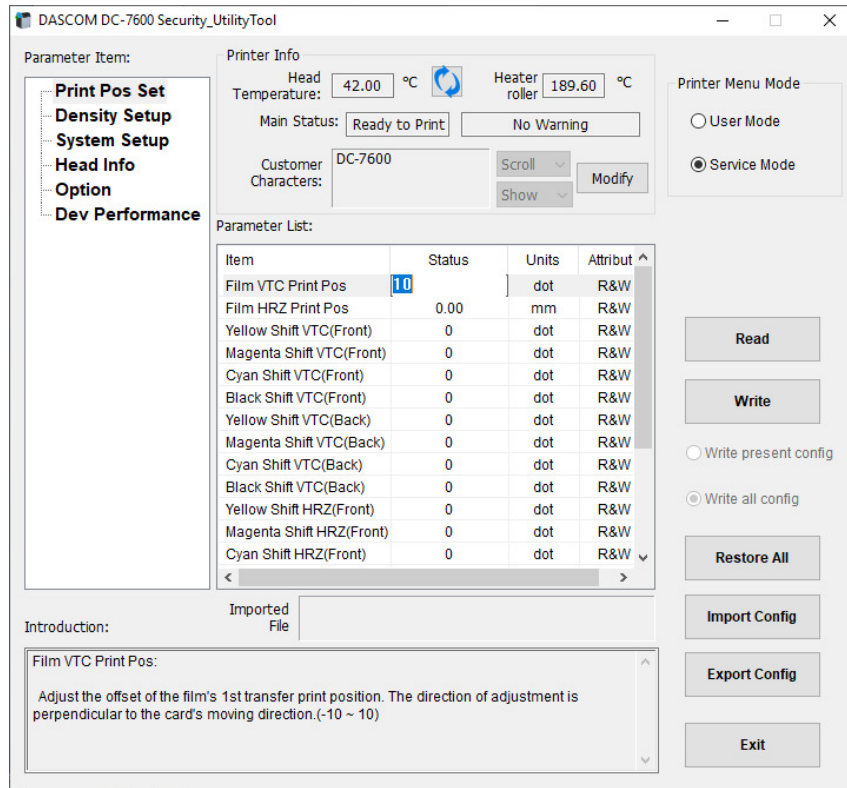
15) Once finish, verifying the Firmware Update was successful as outlined in steps 2, 3, 4 and 5 above –



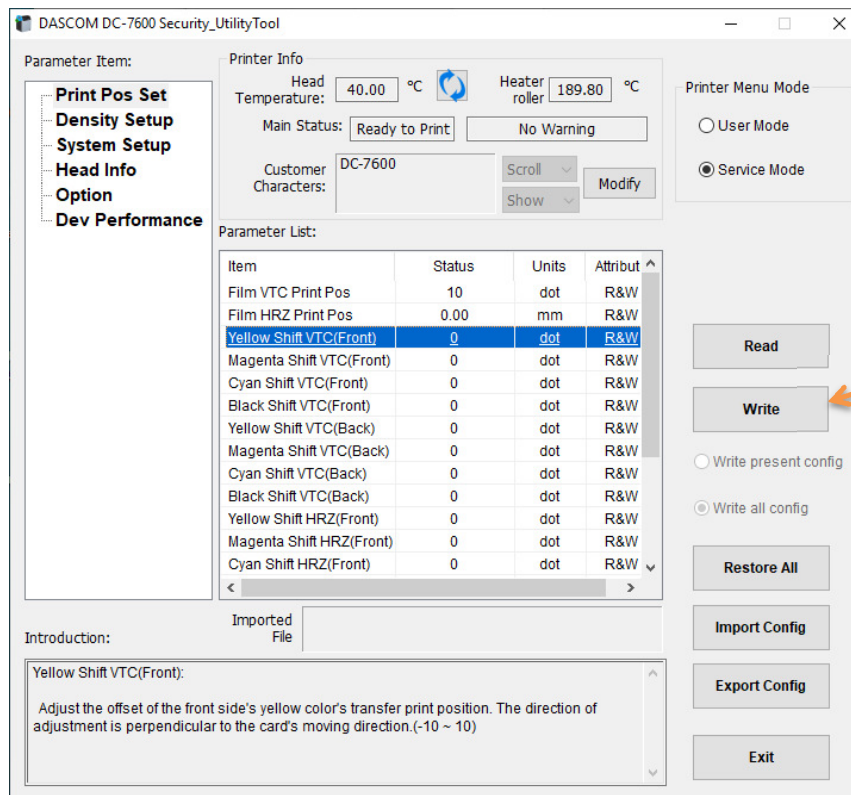
- 16) Go back into Service Mode (following the steps 6 & 7 above), to return the Print Position parameters to those seen before the Update.



17) To add the value, click on the number in the Status Column then type your value.



18) Click on another line to set your change for that parameter.



Once all are placed back in, click on the Write button to store them to memory. The Printer will do a Power recycle and then ready to use once the Printer is back in a Ready State.